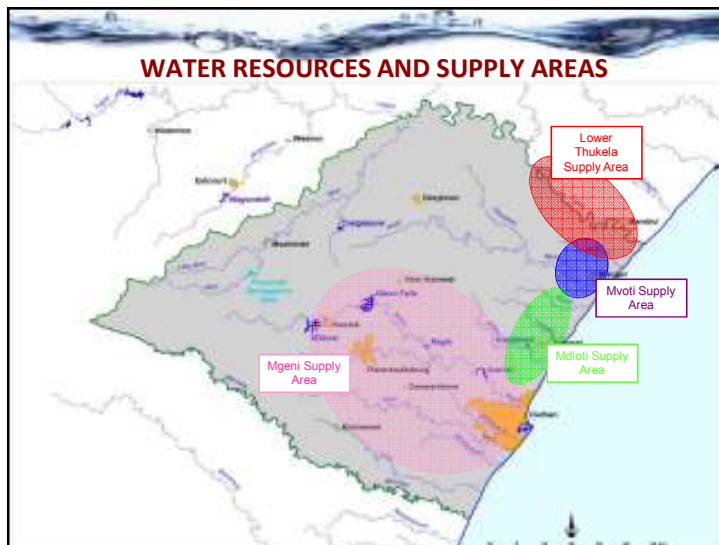




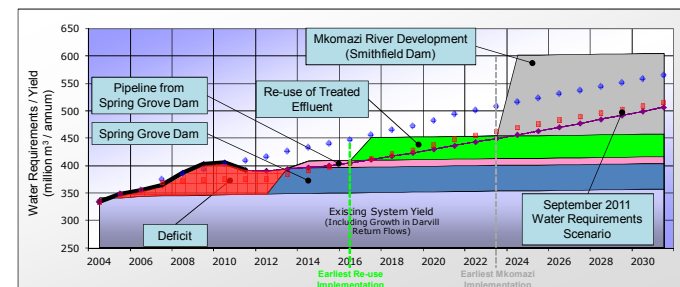
Implementation and Maintenance of the Water Reconciliation Strategy for the KwaZulu- Natal Coastal Metropolitan Areas

WATER BALANCE UPDATE AND WATER SUPPLY SITUATION

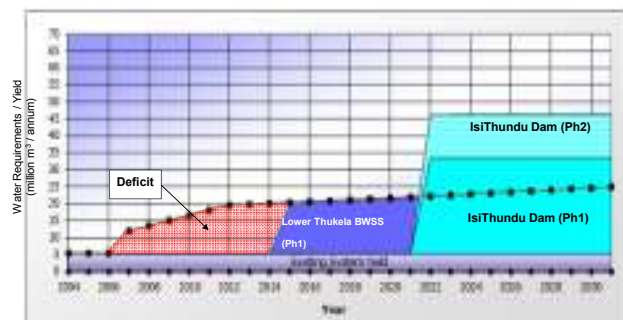
14 March 2012



Water Balance – Mgeni System (September 2011)

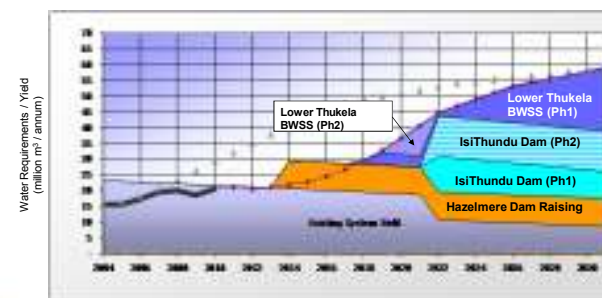


Water Balance – Mvoti System (March 2012)



5

Water Balance – Mdloti System (March 2012)



NEW DEVELOPMENTS

- **Hazelmere Dam Raising**
 - Geotechnical issues
 - Alternative options to Dam raising
 - Implications – more expensive, longer to implement
- The situation was discussed at the recent TSG meeting.
- Alternative supply options were looked at.
- Preliminary financial analysis has been undertaken.



Strategy Actions (1 of 3)

Action	Responsibility
PRIORITY INFRASTRUCTURE PROJECTS	
MMTS 2 - Spring Grove Dam and transfer system	National Water Resource Infrastructure Branch & TCTA
Raising of Hazelmere Dam	National Water Resource Infrastructure Branch
North Coast Pipeline	Umgeni Water

Strategy Actions (2 of 3)

Action	Responsibility
PRIORITY FEASIBILITY STUDIES	
Feasibility Study of the Mkomazi River Transfer Scheme.	DWA Directorate: Option Analysis
Feasibility study of the Thukela and Mvoti systems	DWA Directorate: Option Analysis/ Umgenti Water
Feasibility study for water re-use options	eThekweni Metro
Feasibility study for desalination of sea water	DWA, eThekweni Metro

Strategy Actions (3 of 4)

Action	Responsibility
WATER USE EFFICIENCY	
Implement further Water Conservation and Water Demand Management measures	eThekweni, iLembe, Ugu, Umgungundlovu Municipalities & DWA Directorate: Water Use Efficiency.

MGENI SYSTEM: LOAD SHIFT

- Updated modelling and risk analysis for the KZN coastal water supply area was done based on additional scenarios using the Water Resource Planning model (WRPM)
- Upper Mgeni system includes Midmar Dam with support from the Mooi (Spring Grove/ Midmar); while the Lower Mgeni System included the area from Albert Falls to Nagle and Inanda Dams
- Results will be presented in following presentation

